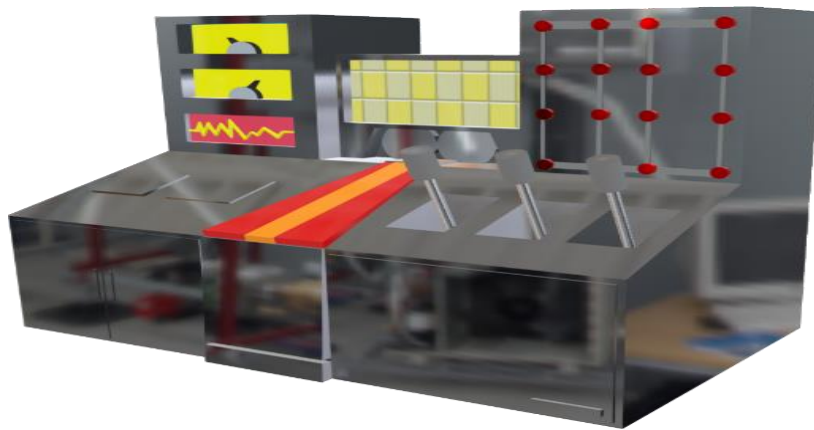


Lecture (2) Types of Computers

1

Supercomputers

- **Definition:** The most powerful type of computer, used for complex calculations.
- **Examples:** IBM Summit, Fugaku.
- **Applications:** Weather forecasting, scientific simulations, nuclear simulations.
- **Visual:**



2

Mainframe Computers

- **Definition:** Large and powerful systems used primarily by large organizations.
- **Features:** High reliability, scalability, and extensive I/O capabilities.
- **Applications:** Transaction processing, large-scale data processing.
- **Visual:**



3

Workstations

- **Definition:** High-performance computers designed for technical work.
- **Uses:** Graphic design, engineering simulations, video editing.
- **Visual:**



4

Personal Computers (PCs)

- **Definition:** General-purpose computers for personal use.
- **Types:** Desktops, laptops, tablets.
- **Applications:** Office work, gaming, web browsing.
- **Visual:**



5

Servers

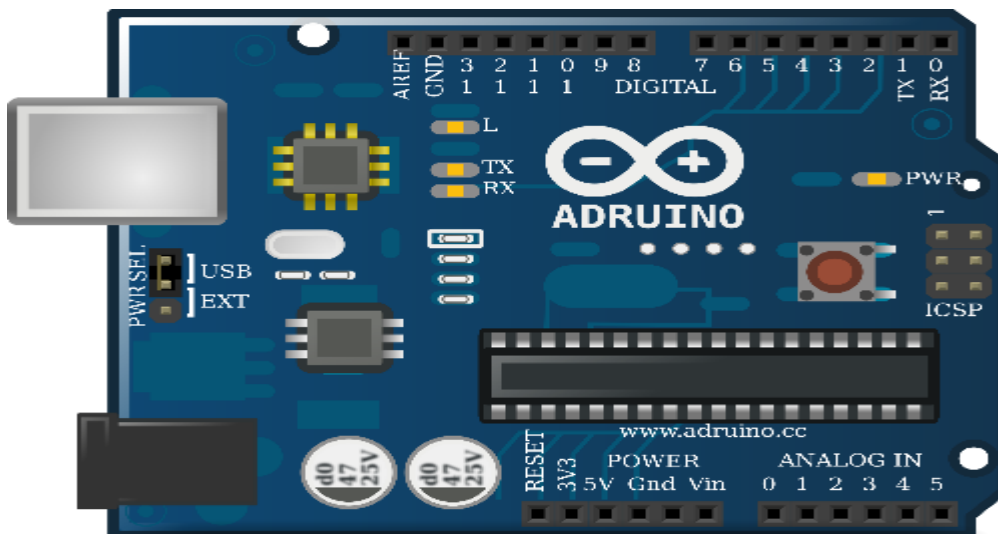
- **Definition:** Computers that provide services to other computers.
- **Types:** File servers, web servers, application servers.
- **Role:** Manage network resources and data.
- **Visual:**



6

Microcontrollers

- **Definition:** Small computing devices embedded in other devices.
- **Applications:** Home appliances, automotive controls, medical devices.
- **Visual:**



Wearable Computers

- **Definition:** Devices worn on the body that can perform computation.
- **Examples:** Smartwatches, fitness trackers, AR glasses.
- **Applications:** Health monitoring, navigation, communication.
- **Visual:**



Comparison of Computer Types

مقارنة بين انواع الحواسيب :

Type	Performance	Use Case	Example
Supercomputer	Very High	Complex calculations	IBM Summit
Mainframe	High	Bulk data processing	IBM zSeries
Workstation	High	Technical applications	HP Z series
Personal Computer	Moderate to High	General use	Dell XPS series
Server	High	Network services	HP ProLiant
Microcontroller	Low to Moderate	Embedded systems	Arduino
Wearable Computer	Low to Moderate	Health monitoring	Apple Watch

Multiple Choice Questions (10)

1- What is the primary use of supercomputers?

- A) Web browsing
- B) Complex calculations
- C) Personal tasks

Answer: B

2-Which type of computer is known for its reliability in processing transactions?

- A) Workstation
- B) Mainframe
- C) Microcontroller

Answer: B

3-What type of computer is typically used for graphic design?

- A) Personal Computer
- B) Workstation
- C) Server

Answer: B

4-Servers primarily provide:

- A) Personal services
- B) Network services
- C) Gaming services

Answer: B

5-Which of the following is a feature of microcontrollers?

- A) High processing power

B) Embedded systems

C) Large size

Answer: B

6-Wearable computers are primarily used for:

A) Gaming

B) Health monitoring

C) Data processing

Answer: B

7-What characterizes a personal computer?

A) Designed for multiple users

B) General-purpose use

C) Extremely high cost

Answer: B

8-Which computer is typically the most expensive?

A) Personal Computer

B) Workstation

C) Supercomputer

Answer: C

9-Mainframes are often used in:

A) Personal tasks

B) Large organizations

C) Gaming

Answer: B



10-Which device is an example of a wearable computer?

- A) Laptop
- B) Smartwatch
- C) Server

Answer: B

True/False Questions (10)

- 1- Supercomputers are used for everyday tasks. (False)
- 2- Mainframes are less powerful than personal computers. (False)
- 3- Workstations are designed for technical applications. (True)
- 4- Personal computers are typically large and expensive. (False)
- 5- Servers provide services over a network. (True)
- 6- Microcontrollers are large computing devices. (False)
- 7- Wearable computers can monitor health. (True)
- 8- Personal computers are only used for gaming. (False)
- 9- Mainframes are primarily used for scientific calculations. (False)

Fill-in-the-Blank Questions (10)

- 1- A supercomputer is the fastest type of computer.
- 2- A mainframe is used for bulk data processing.
- 3- A workstation is designed for technical applications.
- 4- A personal computer is a versatile computer for everyday use.
- 5- A server provides services to other computers.
- 6- A microcontroller governs specific operations.
- 7- A wearable computer is often used for health monitoring.



Short Answer Questions (10)

1- What is a supercomputer used for?

Answer: For complex calculations and simulations.

2- Define a mainframe computer.

Answer: A large, powerful computer used by organizations for bulk data processing.

3- What distinguishes workstations from personal computers?

Answer: Workstations are designed for technical work requiring high performance.

4- What is the primary function of a server?

Answer: To provide services, data, or resources to other computers over a network.

5- Where are microcontrollers commonly found?

Answer: In embedded systems like appliances and automotive controls.

6- Give an example of a wearable computer.

Answer: Smartwatch or fitness tracker.